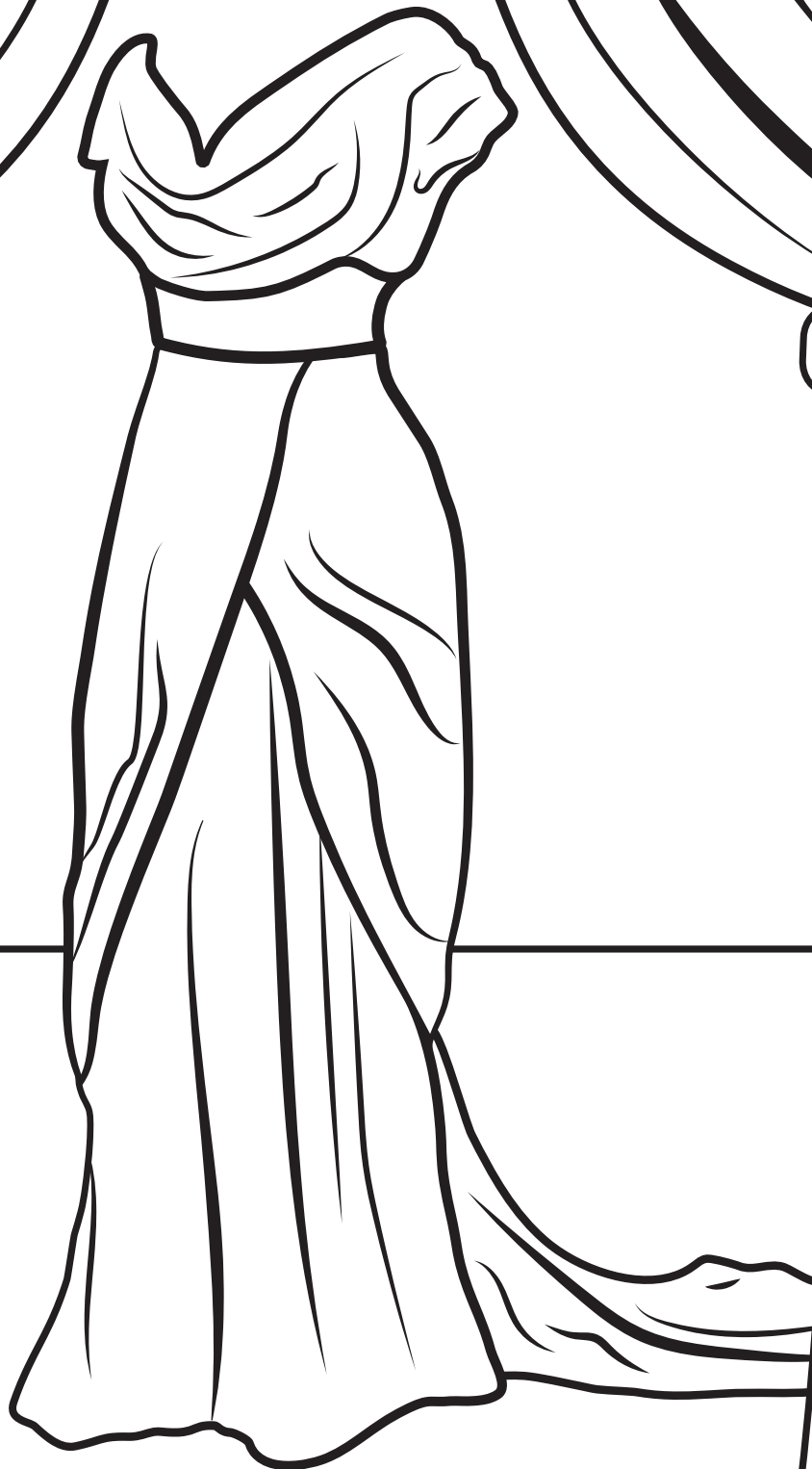




READING
♦ PUBLIC ♦
MUSEUM



Katharine Hepburn: Dressed for Stage and Screen

Costume worn by Katharine Hepburn in *Adam's Rib*, Designed by Walter Plunkett, 1949,
KSUM 2010.12.4 Lent by the Kent State University Museum.

Katharine Hepburn: Dressed for Stage and Screen





READING
♦ PUBLIC ♦
MUSEUM

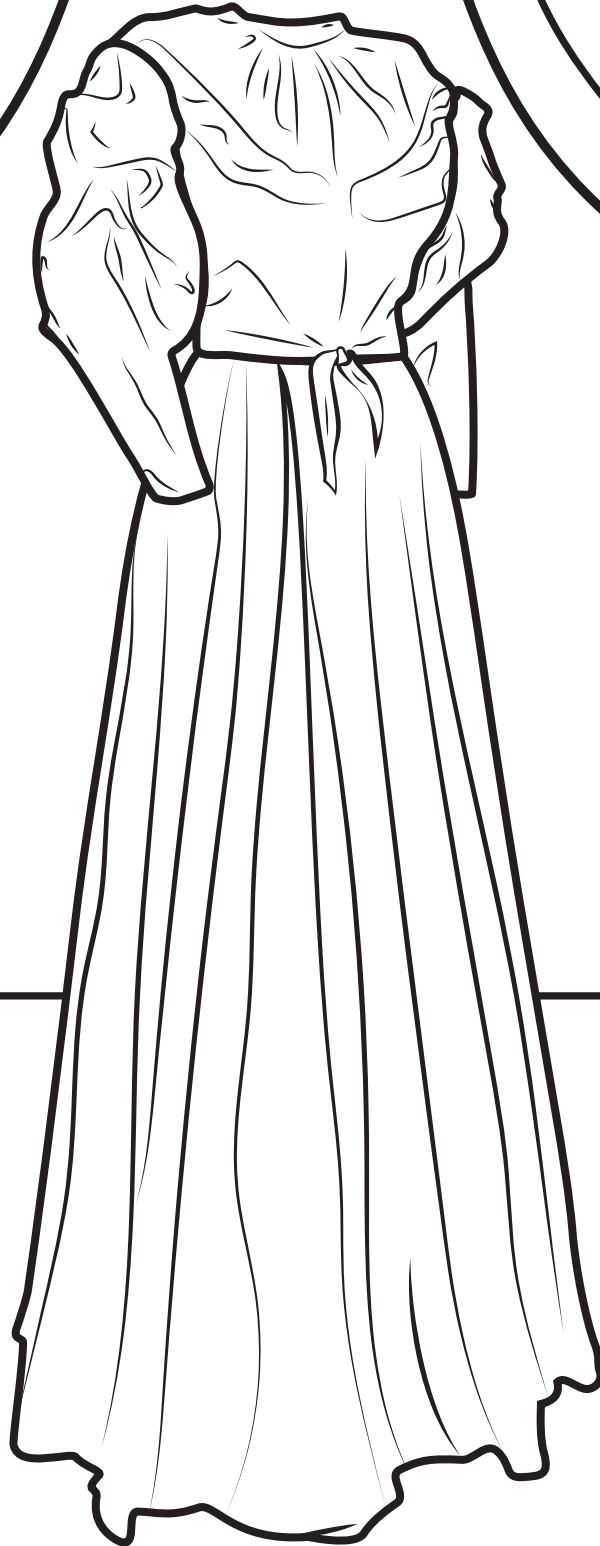


Katharine Hepburn: Dressed for Stage and Screen

Ensemble worn by Katharine Hepburn in publicity photographs for *Guess Who's Coming to Dinner*, 1967.
KUSM 2010.12.107.,106.40. Courtesy of Kent State University Museum.



READING
♦ PUBLIC ♦
MUSEUM



Katharine Hepburn: Dressed for Stage and Screen

Costume worn by Katharine Hepburn in *Without Love*, Designed by Valentina 1942,
KSUM 2010.12.62 Lent by the Kent State University Museum.



READING
♦ PUBLIC ♦
MUSEUM



Katharine Hepburn: Dressed for Stage and Screen

Ensemble worn by Katharine Hepburn in publicity photographs for *Guess Who's Coming to Dinner*, 1967.
KSUM 2010.12.11 a-d Courtesy of Kent State University Museum.